



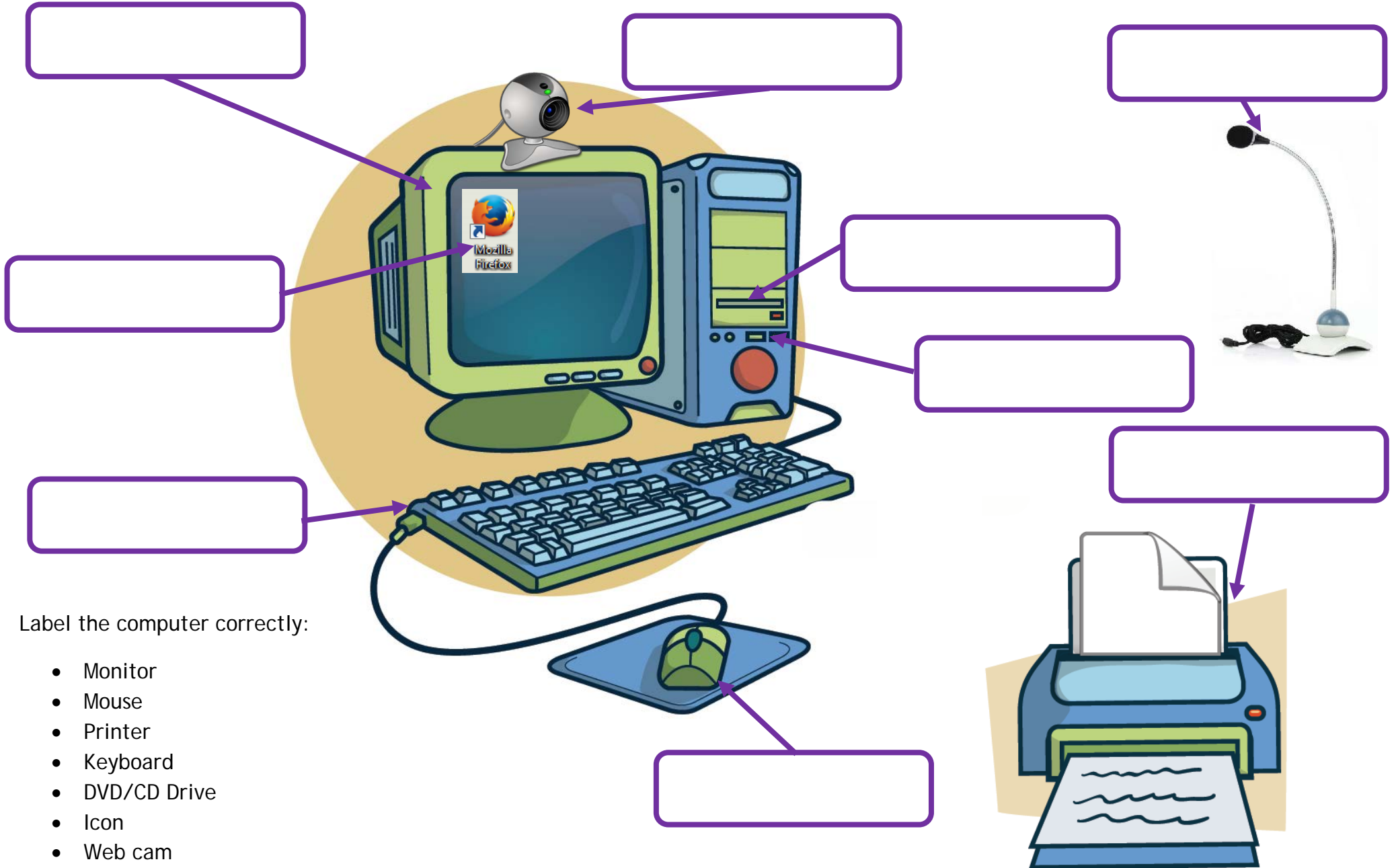
## Digital Maker - Stage 1



Name: \_\_\_\_\_

Complete all tasks:	Parent / Carer / Teacher Signature:
<p>1. Connect two of the following to a computer:</p> <ul style="list-style-type: none"><li>* Mouse</li><li>* Keyboard</li><li>* USB Stick</li><li>* Monitor</li><li>* Camera</li></ul> <p>Explain what job they do.</p>	
<p>2. Complete the worksheet 'Identify the parts of a computer' and hand this to your leader.</p>	Leader signature: _____
<p>3. Design a game:</p> <ul style="list-style-type: none"><li>* Write a set of rules for the game and explain how the character will be controlled.</li><li>* Explain your game to a leader / parent / carer or teacher.</li><li>* Ask for feedback on your idea.</li></ul> <p>You can use the template attached.</p>	
<p>4. Edit an existing website using the template below, you could use the Beaver page on our own website</p> <p style="text-align: center;"><a href="http://www.74thcoventryscouts.co.uk/beavers">www.74thcoventryscouts.co.uk/beavers</a></p>	
<p>5. Play a game with your lodge / six where one of you acts the part of a robot and the others send the robot commands.</p> <p>Record on your 'Robot' worksheet the commands that work best and those that were hard for the robot to follow.</p>	Leader signature: _____

Identify the parts of a computer:



Label the computer correctly:

- Monitor
- Mouse
- Printer
- Keyboard
- DVD/CD Drive
- Icon
- Web cam
- Microphone
- USB Port

## My Game:

My game is called :

My main character is called :

Rules :

Here is a picture of my main character :

Commands :

## Website Design:

## Robot game:

Commands to give your Robot:	Was this an easy command for the Robot to follow?	
	Yes	No
1. Walk forward		
2. Stop		
3. Hop on 1 leg 500 times without stopping		
4. Walk forward 2 steps		
5. Touch your toes		
6. Walk backwards in a straight line without looking		
7. Turn right		
<b>Add three commands of your own:</b>		
1.		
2.		
3.		